

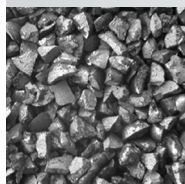
Cast, Steel Shot & Grit

With an ideal microstructure for steel shot, our Ervin AMASTEEL Abrasive Shot and Grit offers the best consistency on hardness levels and typically performs 10-15% more effectively than the competition. At 40-51 on Rockwell C scale, we also provide hardness levels including "M" (47-56 RC), "L" (54-61 RC) and "H" (minimum 60 RC), all engineered to industry standards.

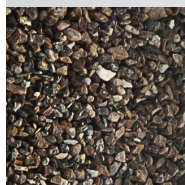
Plus, our stringent standards on voids and density means your products will be solid and last longer. Offered in steel, stainless steel, and mil specs.

**Recycled - Steel Shot & Grit**

Recycling services are also available for all spent materials upon request.

Conditioned Cut Wire

Carbon steel cut wire shot conditioned (rounded) is a premium peening abrasive that has a useful life up to three times longer than cast steel shot. It can also be precisely sized. Since conditioned carbon steel shot has a significantly longer useful life than cast steel shot or grit (two to three times), this reduces the amount of waste produced by blasting operations.

Jetmag - Synthetic Olivine

Blasting sands are non-toxic and are not listed as a hazardous material under the WMHIS. The synthetic sands generate little dust, is safe for the user and its work place, and is environment friendly and contains less than 1% of free silica, no heavy metals and no toxic elements. Designed to be recycled and re-used 3 - 4 times. Its weak density (specific weight) means a higher quantity of material (volume) for a given weight. 34 % more product than with iron silicate! 46 % more product than with garnet!

Aluminum Oxide

V-Blast Brown Fused Aluminum Oxide is a Virgin Brown Fused Aluminum Oxide (VBFA) that has been crushed (using ONLY certified crude) and screened to meet industry specifications. VBFA is made from a mixture of calcined bauxite (alumina), coke, and iron fillings. The mixture is fused at 2000°C and reduced to remove undesirable oxides. After cooling and solidifying, the resulting aluminum oxide is processed into a full range of grit sizes.

